

Application and Data Server (ADS) Lite-E Catalog Page

Building Technologies & Solutions
www.johnsoncontrols.com
2019-02-11

LIT-1900688
Release 10.0



Background

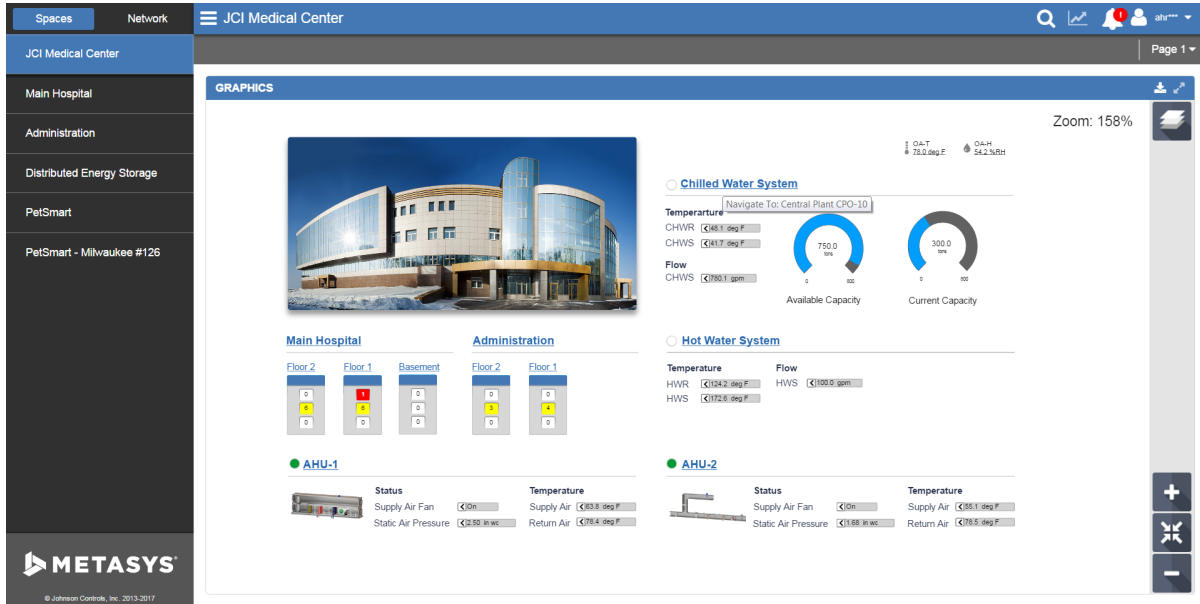
The Application and Data Server (ADS) Lite-E is an optional component of the *Metasys*® system that manages the collection and presentation of large amounts of trend data, event messages, operator transactions, and system configuration data. As Site Director, the ADS-Lite-E provides secure communication to a network of Network Automation Engine (NAE) 35s, NAE45s, Network Control Engines (NCEs), and Network Integration Engines (NIEs). The ADS-Lite-E is available for purchase and use in Europe and Latin America. For more information on the NIE29, NIE39, and NIE49, contact Johnson Controls® Systems Integration Services (SIS).

The Site Management Portal UI of the ADS-Lite-E provides flexible system to change online configuration of the *Metasys* system, optimize control strategies, and perform administrative tasks. The ADS-Lite-E includes an Open Database Connectivity (ODBC) compliant database package for secure storage of historical and configuration data.

Figure 1: ADS-Lite-E Site Management UI



Figure 2: *Metasys* UI



ⓘ **Note:** In this document, the term "engine" refers to all supported NAE35s, NAE45s, NCEs, and NIEs, unless otherwise noted. The ADS-Lite-E supports up to five engines in any combination of NAE35, NAE45, NCE, or NIE29/39/49.

Ordering Information

Table 1: ADS-Lite-E Ordering Information

Code Number ¹	Description
MS-ADSLE5U-0	ADS-Lite-E New project software: for up to five users, on new sites
MS-ADSLE5U-6	ADS-Lite-E Upgrade project software: for up to five users, on sites with a previous version of the <i>Metasys</i> ADS-Lite-E software
MS-ADS05U-8	ADS-Lite-E to full ADS Migration project software: for up to five users, on sites migrating from a previous major release of ADS-Lite-E, to the current release of full ADS

¹ **Availability:** The ADS-Lite-E is available for purchase and use in Europe and Latin America. For information on the NIE29, NIE39, and NIE49, contact Johnson Controls® Systems Integration Services (SIS).

Technical Specifications

The following table lists by operating system the Microsoft SQL Server® Express software editions that have been fully qualified by Johnson Controls for the current release. You can select other combinations, but we recommend that you select from the following pairings.

Table 2: Recommended Operating System and SQL Server Express Combinations

Operating System	Database Software		
	SQL Server® 2016 Express with SP1 (64-bit)	SQL Server® 2014 Express with SP2 (64-bit)	SQL Server® 2012 Express with SP4 (64-bit)
Windows® 10 Pro and Enterprise Editions with Creators Update (version 1709 or later) (64-bit)	X	X	X
Windows® 8.1 Pro and Enterprise Editions with Update 1 (64-bit)	X	X	X
Windows® 7 Professional, Enterprise, and Ultimate Editions with SP1 (64-bit)		X	X

Application and Data Server-Lite System Requirements

Table 3: Application and Data Server-Lite System Requirements

Recommended Computer Platform¹	<p>Intel i7 processor latest version with at least 4 cores or better</p> <p>2 x 320 GB hard disk (RAID 1)² with 40 GB free space after installation of all prerequisite software and before installation of ADS-Lite software. Configure RAID 1 (mirroring) with disk write-caching turned on.</p> <p>① Note: Prerequisite software includes the supported operating system, database software, .NET Framework, and any other software or service packs required for your ADS configuration.</p> <p>Graphics adapter (1 GB RAM, ATI® Technologies or NVIDIA® Corporation, 64-bit compatible [for 64-bit operating systems], Small Form Factor [SFF] if required)</p>
Required Minimum Memory	16 GB RAM minimum
Supported Operating Systems³ and Database Software	<p>Windows® 10 Pro and Enterprise Editions with Anniversary Update (version 1607 or later) (64-bit)</p> <p>Supports:</p> <ul style="list-style-type: none"> • SQL Server® 2016 Express with SP1 (64-bit) • SQL Server® 2014 Express with SP2 (64-bit) • SQL Server® 2012 Express with SP4 (64-bit)⁴

Table 3: Application and Data Server-Lite System Requirements

	<p>Windows® 8.1 Pro and Enterprise Editions with Update 1 (64-bit)</p> <p>Supports:</p> <ul style="list-style-type: none"> • SQL Server® 2016 Express with SP1 (64-bit) • SQL Server® 2014 Express with SP2 (64-bit) • SQL Server® 2012 Express with SP4 (64-bit)⁴
	<p>Windows® 7 Professional, Enterprise, and Ultimate Editions with SP1 (64-bit)</p> <p>Supports:</p> <ul style="list-style-type: none"> • SQL Server® 2014 Express with SP2 (64-bit) • SQL Server® 2012 Express with SP4 (64-bit)⁴
Supported Virtual Environments	<p>Microsoft Hyper-V™</p> <p>VMware®</p>
Supported User Interfaces	<p>Site Management Portal (SMP)</p> <p><i>Metasys</i> UI</p>
Additional Software Included with the ADS-Lite Software Download	<p>Microsoft SQL Server 2014 Standard SP2⁵</p> <p>Microsoft .NET Framework Version 4.6.1</p> <p>Launcher Software</p> <p><i>Metasys</i> Database Manager software</p> <p><i>Metasys</i> Advanced Reporting System software</p> <p>ⓘ Note: The <i>Metasys</i> Advanced Reporting System requires an ADX. The SCT computer must be online and accessible to the ADX at all times.</p>
Optional Hardware	<p>Any network or local printer supported by the qualified Windows operating system</p>
Optional Software	<p>Graphic Generation Tool</p> <p>CCT</p> <p>SCT</p> <p><i>Metasys</i> Export Utility</p>

- 1 Our computer platform and memory recommendations are not meant to imply that older or slower machines are not usable. Refer to the *Network and IT Guidance Technical Bulletin (LIT-12011279)* for more information regarding computer/server recommendations.
- 2 For best performance, use Serial Attached SCSI (SAS) hard drives, not Small Computer System Interface (SCSI) hard drives.
- 3 Refer to the *Network and IT Guidance Technical Bulletin (LIT-12011279)* for specific Microsoft Windows operating system settings that may be required for your *Metasys* system configuration.
- 4 Microsoft SQL Server 2012 Express with SP3 is not an automatic Windows update. For more information, refer to <https://support.microsoft.com/en-us/kb/2979597>.
- 5 SQL Server software is only included with the MS-ADX10SQL product.