

▶ 03-DIN

03-DIN-ACCESS: Access Module

Description

The 03-DIN-ACCESS module is part of the 03 system, a BACnet® platform developed to integrate all aspects of room control into a single controller.

The 03-DIN-ACCESS module provides fully programmable door access control and a combination of universal and door-specific input/output points. The 03 access system includes the 03-DIN-CPU BACnet controller and can be expanded to a maximum of 24 access modules with the addition of 03-DIN-PWRINJ power injector modules.



Application

The 03 system is a complete solution that combines HVAC, access control and lighting control in a modular system. It combines multiple protocols and I/O points in one unit.

Features

- ▶ 1 03-DIN-ACCESS module controls and provides input/output points for a door and a credential reader
- ▶ Fully programmable
- ▶ Configurable Wiegand credential format up to 200 bits. Multiple formats supported at the same time.
- ▶ Door contact and request-to-exit inputs can be monitored to give status of the input wiring using end of line (EOL) circuits (Types 0, 1, 2, 3 4)
- ▶ 03 access system supports up to 100,000 local credentials and 10,000 buffered events

Specifications

Inputs

1 Wiegand input for credential reader data (reader, keypad, biometric device, etc.)

1 input for request-to-exit switch

1 input for door contact

Outputs

1 LED Open collector for credential reader
12VDC, -25 mA max

1 Binary outputs for credential reader power
1 12VDC, 300 mA

2 Binary outputs for powering request-to-exit or door accessories
1 24VDC, 450 mA
1 12VDC, 100 mA

2 Binary outputs for door lock or door accessories
1 24VDC, 450 mA
1 12VDC, 475 mA

Universal Point (Input or Output)

1 input (16 bit), supporting:
0-5 VDC
0-10 VDC
10 kΩ Thermistor
Dry Contact (using 10 kΩ Thermistor software setting)
4-20 mA (using external 250 Ω resistor on 0-5 V setting)

1 output (12 bit), supporting:
0-10 V @ 20 mA max

Connectors

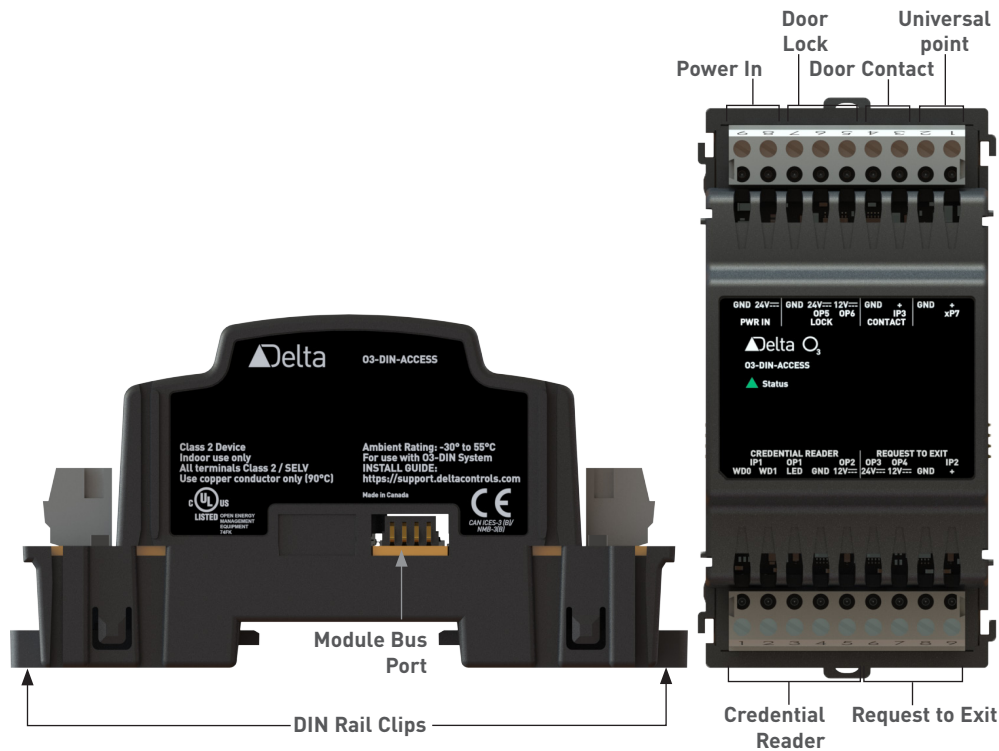
Removable screw-type terminal connectors

Wiring Class

Class 2 / SELV

03-DIN

03-DIN-ACCESS: Access Module



Specifications (Continued)

Power
24 VDC, 1.5 A (36 W max)

Ambient
-30° to 55°C (-22° to 131°F)
10 to 95% RH (non-condensing)

Dimensions
57 x 107 x 58 mm
(2.2 x 4.2 x 2.3 in.)

Weight
102 g (0.22 lb)

Compliance
CE
FCC

Listings
C-UL Listed
UL 916 Listed

BACnet is a registered trademark of the American Society of Heating, Refrigerating and Air-Conditioning Engineers, Inc.

Published 14 November 2019_r

Order the 03-DIN system base unit with one or more modules:

Base Unit

03-DIN-CPU	CPU base unit: 3 network ports, dual Ethernet ports, 3 Power Out, Modbus RTU support, NFC
------------	---

Module Options

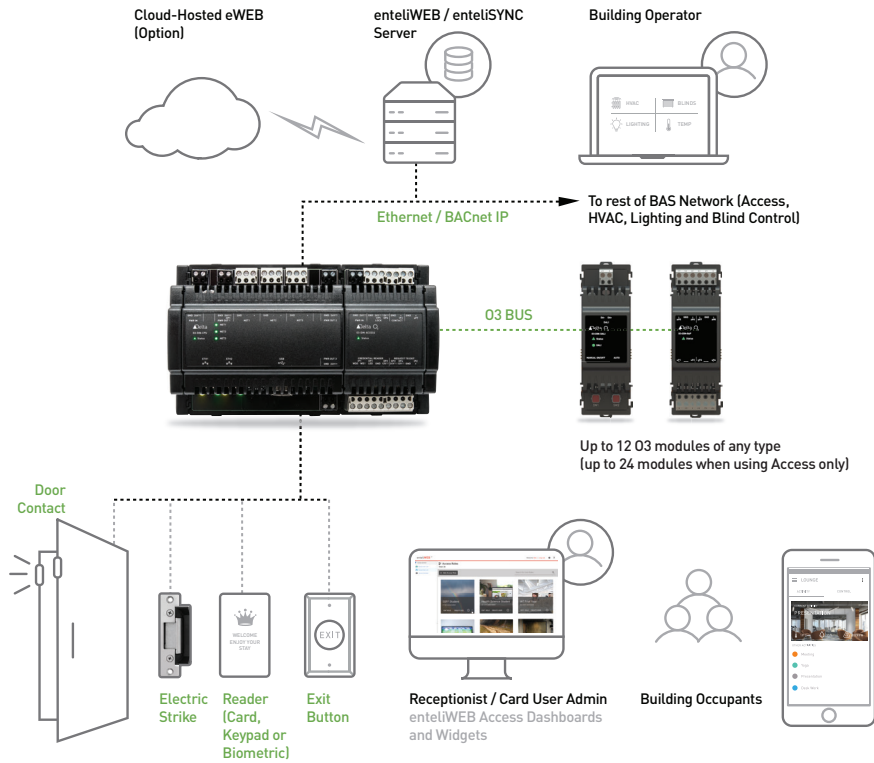
03-DIN-ACCESS	Access module, single door support
03-DIN-8xP	I/O module: 8 Universal I/O, input (0-10V, 0-5V, 10K) or output (20mA source, 10mA sink)
03-DIN-PWRINJ	24 VDC power supply module

Power Supply

DRC-24V60W1AZ	Chrome Line Voltage DC power supply 24V 60 Watt Class A EMC
DRC-24V100W1AZ	Chrome Line Voltage DC power supply 24V 100 Watt Class A EMC
DRS-24V50W1NZ	Sync Line Voltage DC power supply 24V 50 Watt Class B EMC
DRS-24V100W1NZ	Sync Line Voltage DC power supply 24V 100 Watt Class B EMC
DRU-24V10ACZ	24 VDC to 24 VDC 10A DIN mount UPS. Requires 24 VDC power and SLA batteries 3.3aH to 12aH (not included). Battery status, DC power and discharging monitor included.

03-DIN

03-DIN-ACCESS: Access Module



Order the enteliWEB add-on appropriate for your access system:

enteliWEB Add-On

03ACC50	Access Dashboard license up to 50 doors
03ACC250	Access Dashboard license up to 250 doors
03ACC500	Access Dashboard license up to 500 doors
03ACC1000	Access Dashboard license up to 1000 doors
03ACCUnLtd	Access Dashboard license with unlimited doors

Subject to change without notice.